

# STRONGER FAMILIES

*Strengthened by Prevention*



Kansas Children's  
Service League  
Stronger families start here.

**2024**  
ANNUAL REPORT

# CONTENTS

4

## **Letter from CEO & Board Chair**

*Reflecting on 2024*

6

## **KCSL Overview**

*Who we are*

8

## **A New Path Forward**

*Alicia's journey to recovery*

9

## **Our Year in Numbers**

*Making it count*

10

## **How We Did It**

*The power of prevention*

11

## **Rising Above Challenges**

*Victoria's story of resilience*

12

## **Financial Summary**

*Statement of activities, financial position*

14

## **Our Supporters**

*Helping children and families succeed*

18

## **Leadership**

*Driving positive change for families*

**STRONGER FAMILIES** | Strengthened by Prevention

Safe.  
Strong.  
Resilient.

Prevention empowers families to thrive. It opens doors to a future where every child is safe, loved and full of hope. We commit to creating a world where families have the support they need to succeed.

## LETTER FROM THE CEO & BOARD CHAIR



**GAIL COZADD**  
CEO



**BRANDON WHITLEY**  
Board Chair

Dear Friends and Supporters,

As we reflect on 2024, we are reminded that ***Stronger Families, Strengthened by Prevention*** is more than a theme—it is the heart of everything we do at Kansas Children’s Service League (KCSL). We are deeply grateful for the unwavering support we’ve received and the progress KCSL has made. Together, we are advancing our goals to strengthen prevention, build stronger, happier families and create communities where children thrive.

KCSL reached key milestones that have strengthened families across Kansas and elevated the importance of prevention. We had the privilege of visiting the U.S. Capitol in Washington, D.C., where we participated in a bipartisan congressional

briefing hosted by Prevent Child Abuse America. It was an honor to share how primary prevention of child abuse and neglect is essential to the well-being of children, families and communities nationwide.

Closer to home, we expanded our reach by opening new offices in Ottawa and Winfield. Through our nationally recognized home visitation model, we are meeting families where they are and helping them build a brighter future in 44 counties across Kansas.

KCSL also received the gold-level Breastfeeding Employees Support Award in 11 office locations, recognizing our commitment to creating a workplace that supports breastfeeding employees. This recognition underscores our belief in fostering a balanced environment where



employees can excel as caregivers and professionals.

Throughout it all, we've witnessed the life-changing power of prevention through families like Laynie's. A mother of five, Laynie\* worked with KCSL's early childhood home visitation program to strengthen her parenting skills, secure stable housing and enhance her family's stability. Along the way, she launched Ivy Threads, a small business specializing in crocheted sensory tools for children.

Laynie's story is a powerful example of how the right support and resources can transform challenges into opportunities. Her journey reminds us why prevention matters. When families receive support early, they gain the tools to create safe and nurturing homes. This is the power of

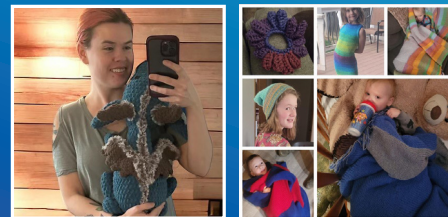
prevention—transforming lives, strengthening families and breaking cycles of adversity.

At KCSL, our mission, *to protect and promote the well-being of children*, remains the foundation of all we do. Guided by our vision and values, we will continue working to prevent childhood adversity, build resiliency and foster communities where every child is safe and loved.

As we enter 2025, we are inspired by the progress we've made and energized by the opportunities ahead. Thank you for joining us and believing in our work to strengthen Kansas families.

Sincerely,

Dan Cogdell 



## From support to success

*\*Laynie's entrepreneurial success, fueled by KCSL's support, demonstrates how empowering parents strengthens families and communities. By providing essential tools and guidance, KCSL enabled Laynie to transform her circumstances and create a business that benefits others.*

# OVERVIEW

We work to create and restore healthy parent-child relationships.



## Our Work

Child Abuse Prevention	School Readiness
Family Support	Education Services

## Our Why

**Prevention** is our best investment. When families thrive, communities benefit. Supported parents create positive childhood experiences and stronger, happier families.

Stronger families start here.  
Our Motto

To protect and promote the well-being of children.  
Our Mission

## Our Locations

EMPORIA  
215 W 6<sup>th</sup> Ave, Suite 209  
(620) 340-0408

GARDEN CITY  
2111 N E Labrador Blvd  
(620) 276-3232

603 E Cedar  
(620) 272-9611

4101 E Hwy 50 #531  
(620) 276-4323

4101 E Hwy 50 #620  
(620) 277-7148

GREAT BEND  
3520 Lakin Ave, Suite 107  
(620) 603-8442

HUGOTON  
507 S Madison St  
(620) 544-4334

HUTCHINSON  
129 W 2<sup>nd</sup> Ave, Suite E  
(620) 664-5000

INDEPENDENCE  
201 N Pennsylvania Ave,  
Suite 307  
(877) 530-5275

IOLA  
106 S Washington Ave  
(620) 290-9028

LEOTI  
108 W Broadway,  
P.O. Box 14  
(620) 375-4933

LIBERAL  
50 Village Plaza  
(620) 624-9220

930 N Kansas Ave  
(620) 626-5339

NEWTON  
718 N Main St, Suite 2  
(316) 333-1888

OTTAWA  
117 N Main St,  
P.O. Box 899  
(785) 214-4337

OVERLAND PARK  
6025 Metcalf Lane,  
Suite 300  
(913) 371-2220

PITTSBURG  
100 S Broadway St,  
Suite 201  
(620) 875-0078

TOPEKA  
3545 SW 5<sup>th</sup> St  
(785) 274-3100

200 SE 40<sup>th</sup> St  
(785) 438-6800

ULYSSES  
921 N College  
(620) 356-4180

837 N Baughman,  
Room E  
(620) 424-4320

WICHITA  
1365 N Custer  
(316) 942-4261

WINFIELD  
820 Main St  
(620) 301-1072

Every child is raised in a loving family and lives in a safe, nurturing community.

## Our Vision



## ALICIA'S JOURNEY

### A New Path Forward: Road to Recovery

Alicia's struggle with substance use began at 19. At first, she believed she had control and stopped using methamphetamines during her first two pregnancies. But by her third and fourth, she couldn't stop. She was frustrated, scared to admit she needed help and unsure where to turn.

When her third and fourth babies tested positive at birth, Alicia was referred to Kansas Children's Service League (KCSL). She hesitated at first fearing her children would be taken away. But she knew she needed to act. When she finally opened up, Alicia's family support worker connected her with a rehabilitation center where she could bring her children. Meanwhile, her children's father was also battling addiction and in and out of jail. Realizing they needed to change, they committed to getting sober for their family.

After treatment, KCSL remained a vital support system. We helped the family secure better housing and access resources to rebuild their lives. When Alicia became pregnant again, she remained substance-free for the first time. Now, she and her children's father have been sober for over two years. They feel like better parents, more connected and involved in their children's lives.

"We're so grateful for KCSL's patience, understanding and support," Alicia said. "They stood by us without judgment and helped us keep our family together."

Alicia's story shows how seeking help, despite fear, can lead to life-changing outcomes. With KCSL's support, she and her children's father overcame substance use. Now, they are a stronger family who has created a stable, healthy home.





# OUR YEAR IN NUMBERS

**5,644,459**

KCSL's Facebook and Instagram reached over 5.6 million impressions.

**26,614**

In April, we distributed over 25,000 materials to raise awareness of positive childhood experiences.

**850**

We provided support to 850 school-aged children, helping them thrive academically and emotionally.

**28**

Our 2024 Corporate Partners supported KCSL's mission and helped amplify recognition.

**296,835**

Our website, [kcsl.org](https://www.kcsl.org), generated more than 290,000 page views.

**3,388**

KCSL volunteers contributed over 3,300 hours, averaging 55 active volunteers a month.

**625**

Thank you to our 625 donors in 2024. Your generosity made a difference!

**11**

Multiple KCSL locations earned the gold-level Breastfeeding Employees Support Award.

**\$175,000**

We received a new grant to support early education in southwest Kansas.

**2,795**

KCSL's early childhood programs served over 2,700 children ages 0-5.

**525**

Our prevention conference drew 525 attendees, a 9% increase from last year.

**2**

We broadened our support network for families with the opening of new offices in Ottawa and Winfield.

# HOW WE DID IT



## Child Abuse Prevention

breaking cycles  
of trauma to help  
communities thrive

Children remained safe at home with their parents.

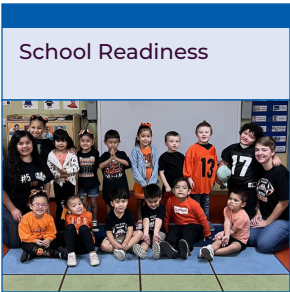
99%

Families received weekly home visits to support healthy child development.

1,088

Families reported KCSL services improved their quality of life.

95%



## School Readiness

increasing future  
graduation rates

School-aged children/youth improved behavior ensuring their ability to learn in school.

92%

Children completed developmental assessments improving their well-being and long-term outcomes.

701

Families with children ages 0-5 received comprehensive early childhood education services

680



## Family Support

helping families  
succeed to be better  
parents

Children connected to a pediatrician.

98%

Individuals sought information from our 1-800-CHILDREN helpline, site and app.

106,665

Parents reported improvement in their family functioning.

87%

Parents participated in virtual support groups impacting 612 children.

749



## Education Services

building a stronger,  
more resilient and  
educated workforce

Professionals learned how to prevent child abuse and improve well-being.

8,925

Participants reported an increase in their knowledge or skills learned.

99%

Educational materials distributed to partners, professionals and parents across Kansas.

104,238

## VICTORIA'S STORY



### Rising Above Challenges: A Journey to a Brighter Future

**Victoria** enrolled in Kansas Children's Service League's (KCSL) early childhood home visitation program for new parents in September 2021. As a first-time mother to 1-month-old Jabree, she felt overwhelmed and unsure how to care for her baby. Her family support specialist provided guidance and support from the start.

Victoria set personal goals to be active with Jabree, build a strong bond and create the stability she lacked growing up. She also aimed to secure stable employment with insurance and obtain a driver's

license and car. With KCSL's support, she achieved these goals, and life improved for her and Jabree.

Then, circumstances changed. Victoria and Jabree became unhoused, forcing them to sleep in their car before finding shelter. Despite the hardship, Victoria remained determined to keep her son safe. Stress took a toll on her mental health, but KCSL provided unwavering support through visits, texts and essential resources. Most importantly, her specialist reinforced the positives in Victoria's efforts, helping her stay motivated. Strengthened by prevention, she continued working toward stability enrolling Jabree in daycare and securing long-term housing.

In spring 2024, Victoria reached a major milestone—moving into her own home. KCSL helped provide essentials including a housewarming gift. Now, she and Jabree are settling into their apartment while she pursues workforce certification for better employment.

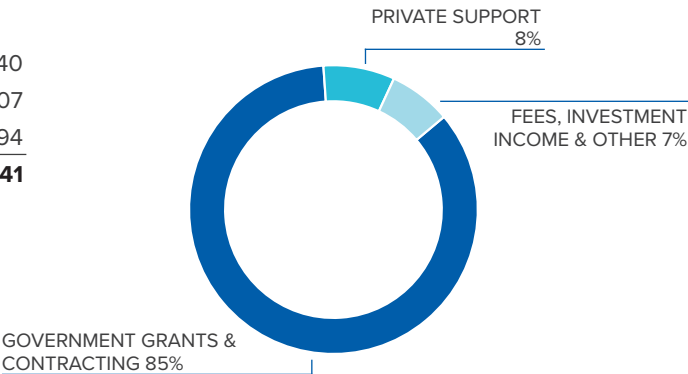
Recently, Victoria shared her story at a local youth retreat, inspiring others with her journey. Through love, resilience and hard work, she has created a stronger, more stable future for her family.

# FINANCIAL SUMMARY 2024 (unaudited)

## Statement of Activities

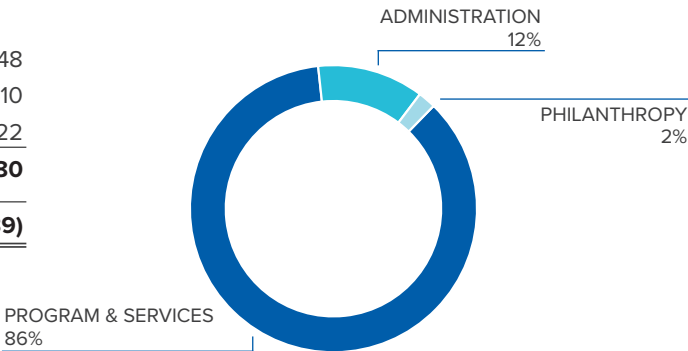
### REVENUE

Government Grants & Contracting	\$	16,143,440
Private Support		1,522,207
Fees, Investment Income & Other		1,376,494
<b>Total Revenue</b>	<b>\$</b>	<b>19,042,141</b>



### EXPENSES

Programs & Services	\$	16,412,648
Administration		2,403,410
Philanthropy		320,222
<b>Total Expenses</b>	<b>\$</b>	<b>19,136,280</b>
<b>Change in Net Assets</b>	<b>\$</b>	<b>(94,139)</b>





# Statement of Financial Position

## ASSETS

Total Assets	<u>\$ 11,305,594</u>
--------------	----------------------

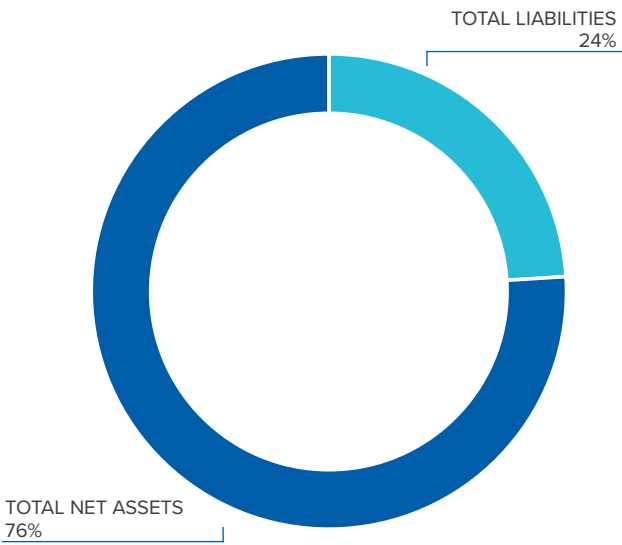
## LIABILITIES AND NET ASSETS

### Liabilities

Total Liabilities	<u>\$ 2,701,602</u>
-------------------	---------------------

### Net Assets

Unrestricted	\$ 6,034,310
Permanently Restricted	2,569,682
Total Net Assets	<u>\$ 8,603,992</u>
Total Liabilities & Net Assets	<u>\$ 11,305,594</u>



# OUR SUPPORTERS

## KCSL GIVING SOCIETY

- |                                   |                           |
|-----------------------------------|---------------------------|
| American Implement, Inc.          | Michael & Grace Morrison  |
| Allmetal Recycling                | Pioneer Communications    |
| Anonymous                         | Randall & Jan Steinert    |
| Bruce & Kathy Graham              | Rental Enterprise         |
| Catherine & Ford Ross             | Rick & Elena Bloomer      |
| D L Smith Electrical Construction | Roger & Joan Underwood    |
| David & Georgiea Slyter           | Rusty & Tiffany Arnold    |
| Gail & Craig Cozadd               | Samuel Carkhuff           |
| Jenelle Carkhuff                  | Sandy & Stanley Vogel     |
| Jeremy & Becky Kindy              | Sharon Stephens           |
| Jeri & Greg Hewitt                | Sharp Honda               |
| Jim & Sheri Stewart               | Stephan & Kathy Henry     |
| Joan & Stephen Tempero            | Stephanie & Robert Palmer |
| John & Brenda Bridson             | Steve & Peggy Alford      |
| Kassandra & David Jensen          | Ted & Denecia Davis       |
| Kelly Hayes                       | Tim & Carol Jacobs        |
| Ken & Pam Alexander               | Tony & Judith Pleviak     |
| Kent & Rachelle Curran            | Vicky & Jeff Roper        |
| Kim & Don Wilson                  | William & Debra Anderson  |
| Larry & Ann Mah                   |                           |
| McElroy's Inc.                    |                           |

## DONOR LIST

### CHAMPIONS FOR CHILDREN

#### \$20,000+

Anonymous  
B Brister Hospital Trust  
Baughman Foundation  
BOK Financial  
Charles & Jessica Wolff Foundation  
Gladys Eddy Irrevocable Trust  
Greater Kansas City Community Foundation  
Kappa Delta Sorority–Zeta Epsilon Chapter  
Lewis H. Humphreys Charitable Trust–Bank of America  
Linda McHenry  
Lon & Nancy Lewis  
Patterson Family Foundation  
Topeka Community Foundation  
United Community Services  
Walter S. & Evan C. Jones  
Testamentary Trust

### INVESTORS FOR CHILDREN

#### \$10,000-\$19,999

UBS Financial Services, Inc.  
Bruce G. Cochener Foundation  
Catherine & Ford Ross  
Emprise Bank  
Everygy  
John W. & Effie E. Speas Memorial Trust  
Liberal Area Coalition for Families  
Nancy Jo Coburn  
Oppenstein Brothers Foundation  
Patsy Walz  
Sandlian Realty  
Western Kansas Community Foundation

### LEADERS FOR CHILDREN

#### \$5,000-\$9,999

Bank of the West  
Blackbaud Giving Fund  
Bukaty Companies  
David Parker  
Federal Home Loan Bank Topeka  
IMA  
J.E. Dunn Construction  
Joan & Stephen Tempero  
Johnson County Bar Foundation  
Kendra Scott Jewelry  
Lardner Monuments  
Larry Cook  
Prairie Band Casino & Resort  
Randall & Jan Steinert  
Robert Brogden's Automotive Group  
Schwartz Foundation  
Security Benefit  
Sharp Honda  
The Commerce Trust Company  
Tuw Lewis P Humphreys Test Trust  
United Way of the Plains  
Walter & Diane Mooney

### GUARDIANS FOR CHILDREN

#### \$2,500-\$4,999

Aetna  
Animal Medical Center  
City of Garden City  
DEMDACO  
El Dorado Buick/GMC  
Elizabeth M. Watkins Irrevocable Trust  
Emporia Community Foundation  
Everygy Foundation  
First Call For Help

Gail & Craig Cozadd  
Golden Plains Credit Union  
Good Neighbor Fund, Spirit  
AeroSystems Inc.  
INTRUST Bank  
Jewish Community Foundation of Greater Kansas City  
Kossi Jondoh  
Michael & April Gerber  
Project Linus  
Roger & Joan Underwood  
Seward County United Way  
St. Anthony Catholic Church  
Steve & Marla Webb  
Stormont Vail HealthCare  
Sukhdeep Kaur  
Tanner Garver & Kimmy Tilton  
Weaver Wright Trust  
Wichita Foundation  
Wilk Family Foundation

### PATRONS FOR CHILDREN

#### \$1,000-\$2,499

Advisors Excel, LLC  
AgVantis  
Alice Vernon  
Allmetal Recycling  
Assetmark Trust Company  
Amber & Brad Miller  
Barbara Hesse  
Blue Beacon International, Inc.  
Blue Cross Blue Shield Kansas Pathways  
Bruce & Connie Burns  
Central Kansas Community Foundation  
Charles E. Carey Memorial Fund  
Christ the King Church

Clemens Insurance Agency Operations  
 Community Congregational Church  
 Community National Bank & Trust  
 CoreFirst Bank & Trust  
 Cynthia Sheppeard  
 D L Smith Electrical Construction  
 David & Georgiea Slyter  
 Davis Moore Automotive, Inc.  
 Dennis & Patricia Petterson  
 Elaine Theel  
 Emporia Church of Christ  
 Fidelity Brokerage Services LLC  
 Finney County Attorney's Office  
 Finney County United Way  
 First Presbyterian Church  
 Frontier Forest Products  
 Golden Belt Community Foundation  
 Goodell, Stratton, Edmonds & Palmer, LLP  
 H. & Darlene Elwood  
 Here We Grow Again  
 INTRUST Bank  
 Jan & Robert Maxwell  
 Jason & Amanda Humphrey  
 Jason & Elizabeth Pruitt  
 Jeremy & Becky Kindy  
 Jeri & Greg Hewitt  
 Jim & Sheri Stewart  
 Joel Schlotthauer  
 John & Barbara Stauffer  
 John & Brenda Bridson  
 Junior League of Wichita  
 Kansas Gas Service  
 Karen & Harry Craig  
 Katherine & Andrew Pope  
 Kelly Hayes  
 Kent & Rachelle Curran  
 L Marie Haun Charitable Fund for Children  
 Lacey Deiter  
 Larry & Ann Mah  
 Margaret Jacobs  
 Margaret & Steve Williams  
 Mark & Lisa Heitz  
 Marsha Reese  
 Matt Zeysing  
 Matthew & Lisa Chappell  
 McElroy's Inc.  
 Michael & Grace Morrison  
 Morgan Stanley

Murdock Companies Inc.  
 Pioneer Communications  
 Project Linus  
 RBC Capital Markets, LLC  
 Rental Enterprise  
 Rick & Elena Bloomer  
 Richard & Leanne Klassen  
 Roger Dirks & Cindy Capellari  
 Sally Holliday  
 Samuel Carkhuff  
 Sandy & Stanley Vogel  
 Scott Community Foundation  
 Shanda DeYoung  
 Shanna & Neil Stewart  
 Sharon Stephens  
 St. James Episcopal Church  
 Stephan & Kathy Henry  
 Stephanie & Robert Palmer  
 Stifel  
 Ted & Denecia Davis  
 TFI Family Services  
 The Kroger Co. Zero Hunger Zero  
 Vicky & Jeff Roper  
 Waste Foundation  
 Tim & Carol Jacobs  
 Timothy & Melissa Shultz

### **FRIENDS FOR CHILDREN**

**\$500-\$999**

6 Meridian  
 Allen Tollefson  
 Anne Hopper  
 Austin & Allison Walker  
 Boy Scout Troop #46  
 Brandon & Terri Whitley  
 Carly & James Martz  
 Central Mechanical Wichita  
 Chris & Nicole Hamm  
 Cindy Lash & Gary Hug  
 Clayton Wealth Partners  
 Cox Communications  
 Crowley Law Office  
 Dan & Amy Dejmal  
 DeVore Employees Committee  
 Doyle & Bruce, LLC  
 Dustin Moses  
 Farmers Bank of Kansas City  
 Garden Plains Pro Life

Gloria Dei Lutheran Church  
 Harvey County Local Health Equity  
 Action Team  
 Heartland Compliance Association  
 Hew & Judy Goodpasture  
 High Plains Heritage Foundation  
 Hightower Holding, LLC  
 James & Sharon Kincaid  
 Janice Martens  
 Jay & Sharon Bezdek  
 Judy Drake  
 Kansas Dairy Development  
 Kaw Valley Bank  
 Keegan Wilson  
 Kendra Scott  
 Kiwanis Club of Ulysses  
 Larry & Virginia Kepley  
 Legacy Apple II, LLC  
 Linda & Mike Gallagher  
 Lindsey Nussbaum  
 Lisa & Brad Harder  
 Lisa & Thomas Stubbs  
 Margaret McCarthy & Scott Teeter  
 Marilyn Stephan  
 MSSC Physician Leadership Alliance  
 Mulberry Bush Consignment Sale  
 National Beef Packing Co., LLC  
 Overbrook Community Chest  
 Panera Bread  
 Panhandle Eastern Pipe Line Company LP  
 Patterson Legal Group  
 QuikTrip Corporation  
 Ranae Martin  
 Randy & Debra Clayton  
 Rhea Lana's of Greater Wichita  
 Richard & Betty Bean  
 Ron & Annette Thornburgh  
 Rusty & Tiffany Arnold  
 Sandy Simonich  
 Shanna Whitton  
 Sophia Berman Molk Foundation  
 Steve & Lori Clinkinbeard  
 Textron Aviation  
 The Garden City CO-OP, Inc.  
 Tisha Johnson  
 United Way of Reno County  
 Westin & Brooke Everhart  
 Wichita State University



William & Mary Braun  
William & Nancy Peterson  
Yeai & Mei-sha Roan  
Zachary & Ashley Schultz

### ADVOCATES FOR CHILDREN

#### \$250-\$499

Alfonzo Bowens  
Bank Midwest  
Beta Sigma Phi, Sigma Nu Chapter  
Bethanie Popejoy  
Bill Gale & Charissa Jarboe-Gale  
Blanca Lopez  
Brad & Jackie Heyen  
Brenda & Robert Casper  
Bruce & Barbara Dirks  
Bruce & Nancy Cochener  
Burlington Northern Santa Fe SMT  
Candace Clark  
Cheryl Semmel  
Chris & Ashley Purdum  
Christian & Jennifer Bitner  
Coldwell Banker Emporia  
Community Woodworking Co.  
Core Hospitality  
David & Paul Fernkopf  
Debra & Ray Gates  
Derek & Canda Harvey

Dwayne & Rebecca Martz  
Ebenezer Church of Olpe  
Farmers Bank & Trust  
Fowler Equity Exchange  
Frank Lloyd Wright Allen House  
Fredric & Nancy Kerr  
Fry Eye Associates, P.A.  
GC Operations, LLC  
Greg Rea  
Heritage Bank  
Humboldt United Methodist Church  
Janice Ayers  
Jared & Marie Friesen  
Jeff Coykendall  
Jennifer Jewers Bowlin  
Jim & Ethel Edwards  
Jump Start Stores, Inc.  
Kendra Scott Jewelry  
Kenneth Frey  
Kroger Convenience Stores  
Landmark National Bank  
Lisa Kohake  
Lori & James Scheidel  
Lot Weckerling  
Marilyn & Bill Graham  
Mary Dobbins  
Maurice & Naomi Cashman  
Michelle Skinner Agency LLC

Midwest Single Source  
Nikki Barber  
Paul Parise  
Pledgeling Foundation  
Raymond James Global Account  
Reading United Methodist Church  
Rhonda & Scott Gordon  
Rhonda Sullivan  
Roger Velez  
Rotary Club of Emporia  
Servaes Brewing Co.  
Shirley Parsons  
Sonya Castillo Agency LLC—American  
Family Insurance  
Steve & Gena Dillard  
Stonehill Trademark Collection by  
Wyndham  
Teresa Maley Epperson  
The Church of Jesus Christ of Latter-  
Day Saints  
The Print Source  
Thea Parks  
Tony & Denise Veith  
Topeka Kiwanis Charities, Inc.  
Trudy & Ulderic Racine  
United Way of Central Kansas  
United Way of Kaw Valley, Inc.  
Vernon & Cheryl Prostler

## PLANNED GIVING MEMBERS

*The O.S.  
Morrow  
Society*

Aileen DeBruce  
Alice Vernon  
Anne Derstein  
Anonymous  
Betty Marshall  
Brad & Jackie Heyen  
Catherine & Ford Ross  
Darlene & Eric Knorr  
David & Barbara Rolph  
Diane Rolph  
Ernestine Heide  
Gwen Sevart  
Harland Cardwell  
Hilda Dyer

Janet & Jim Schalansky  
Jayne Smith  
Jeremy & Becky Kindy  
Jim & Ethel Edwards  
Joan & Stephen Tempero  
John Wenzel  
Lee & Bradley Walker  
Linda McHenry  
Lon & Nancy Lewis  
Loren Furnas  
Lovilla Linn  
Marcia Berkley  
Margaret & Steve Williams  
Mary Dobbins

Melvin & Ora Lee Jeardoe  
Noelle Drechsel  
O.S. Gossard  
Pat & Albert Campbell  
Paula & Gary Weber  
Randall & Jan Steinert  
Ray & Jan Schroering  
Renee Duxler & Mark Anderson  
Robert & Barbara Wunsch  
Terry & David Glover  
Tom & Debra Akins  
William & Patti Edison

## LEADERSHIP | KCSL Board of Directors



BRANDON WHITLEY  
IMA Financial Group  
Wichita, Chair\*



JERI HEWITT  
Emprise Bank  
Wichita, 1<sup>st</sup> Vice Chair\*



MELINDA CLEMENS  
Clemens Insurance Agency  
Wichita, 2<sup>nd</sup> Vice Chair\*



MATTHEW CHAPPELL  
Kansas State Historical Society  
Topeka, Treasurer\*



TERESA MALEY EPPERSON  
Retired  
Olathe, Secretary\*



CECILIA ALONSO  
Liberal, Ex-Officio



TIFFANY ARNOLD  
Henderson Engineers, Inc.  
Olathe, Ex-Officio



LARA BLAKE BORS  
Bors Law, PA  
Garden City



TOBY COOK  
The University of Kansas  
Health System  
Kansas City



LACEY DEITER  
Advisor's Excel  
Topeka, Ex-Officio



MARILYN GRAHAM  
First Call for Help  
Hutchinson, At-Large



TISHA JOHNSON  
Everygy  
Wichita



BRITTANY MARTIN  
Aim to Inspire Meliorism  
Garden City, Ex-Officio



MARY MOFFATT, MD  
Children's Mercy  
Prairie Village



HEATHER MORGAN  
Kansas Association of  
Community College Trustees  
Topeka, At-Large



BETHANIE POPEJOY  
Kansas Bureau of Investigation  
Topeka, At-Large



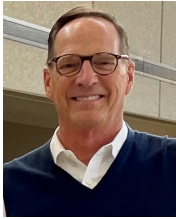
JASON PRUITT  
JE Dunn Construction  
Kansas City



SHIRLEY SCOTT  
Community Volunteer  
Liberal, At-Large



TIMOTHY A. SHULTZ  
Stormont Vail Health  
Topeka, At-Large



RANDY STEINERT  
Retired  
Wichita, Ex-Officio

## LEADERSHIP | KCSL Foundation Board of Trustees

ZACH SCHULTZ  
Schultz Law Office, P.A.  
Garden City, Chair\*

GAIL COZADD  
Administrative Director  
Topeka, Proxy\*

RICK BLOOMER  
Retired  
Wichita

WESTIN EVERHART  
Textron Aviation  
Wichita

LESLEY HAZLETON  
The Galaxy Group  
Wichita

CHRIS PURDUM  
Commerce Bank  
Wichita

LINDA GALLAGHER  
Kansas Department for  
Children and Families  
Lenexa, Vice Chair\*

KENT CURRAN  
KCSL CFO  
Wichita, Treasurer\*

DAN DEJMAL  
Evergy  
Wichita

DAVID FERNKOPF  
Kansas National  
Education Association  
Topeka

JAN MAXWELL  
Retired  
Topeka

STANLEY TEETER  
Retired  
Topeka

# Thank you!

*We extend heartfelt gratitude to the KCSL Board of Directors and KCSL Foundation Trustees for their unwavering support and dedication to improving the lives of Kansas children and families. Your commitment is truly inspiring and has a profound effect on those we serve.*

\*Denotes Executive Committee Member



Kansas Children's  
Service League  
Stronger families start here.

# 2024

## ANNUAL REPORT



kcsl.org |    

